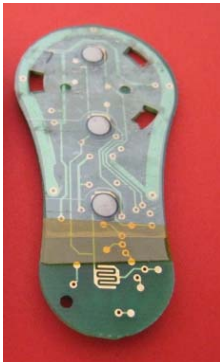


This procedure for “*Jeep Cherokee remote key – Worn out button replacement procedure*” was prepared by Polmex, Western Australian innovative Engineering Company, specializing in design and manufacture of special purpose Silicone products. Supplying to the market Silicone Buttons for worn out remote keys of various makes and models. Hyundai, Holden, Commodore, Ford, Mitsubishi, Nissan, Rover, Land Rover, Peugeot, BMW, Jeep, Mazda ...

For Orders please visit us on line at [www.polmex.com.au](http://www.polmex.com.au)

Our REPLACEMENT Buttons/Pads are made from LSR Silicone and will not break, due to deteriorating effects of sunlight, water and chemicals commonly encountered in service such as Detergent, Oil, and Methanol. **Our silicone buttons are flexible and will not deform, change shape, degrade and brake over period of time. They are much more durable than originals and are designed to Last.**



### **Button Replacement Procedure**

1. Prise open your remote with small screwdriver to end up with 2 parts: One consisting of hard shell with battery in it and second one with electronic component and rubber insert.
2. Remove old rubber insert from the shell.

( Note: inside of your remote you have a clear cover that consists of domes with conductive material attached to them. originally this cover was glued by the manufacturer but it may be that it got detached from the board and moved from its position. We suggest fastening this clear cover to the board with small bits of sticky tape before you put your remote together.)

3. Stretch new silicone pad over electronic board.
4. Close your remote in reverse order till it closes firmly

Once button replacement is finished, remote will work straight away with **no need for re-programming.**